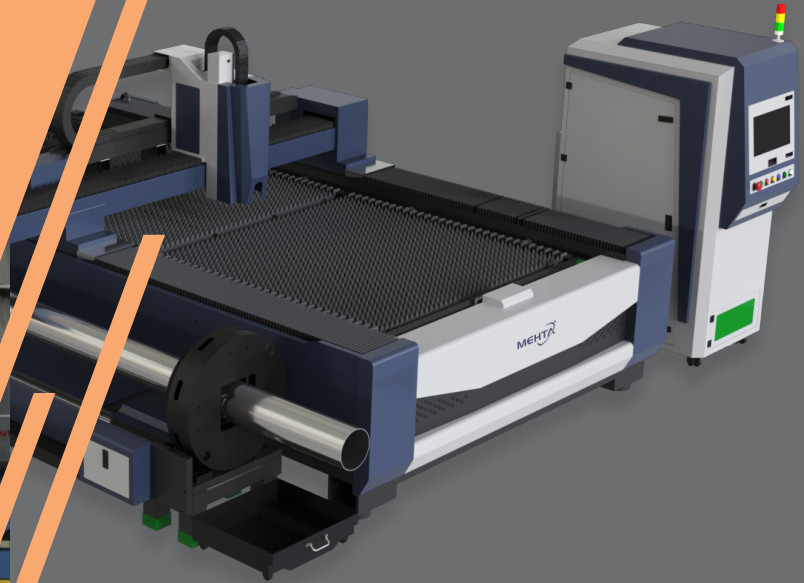




WE CAN PROVIDE A COMPLETE SOLUTION
FROM DESIGN TO MANUFACTURING UNDER ONE ROOF

SINCE 2013



Metal Laser Cutting Services
Metal Sheet CNC Bending Services
Power Press & Machining Parts
Metal Powder Coating Plant
Spray Painting Services
Plastic & Rubber Components

Introducing

Our company, **KK ENTERPRISES** is located in Bahadurgarh, Haryana India and is part of the manufacturer of sheet metal, laser cutting, cnc bending plastic parts, powder coating & spray painting job work.

We are providing sheet metal parts to our clients that are manufactured as per the industry norms and specifications. These have earned wide accolades in the market as these are characterized as rust resistance, high strength, optimum quality, dimensional accuracy and many more. We deliver our products at competitive leading prices.

Offered sheet metal parts find their application in various industries such as automobile, electrical, electronics, defense, consumer electronics and many more. Our company has varieties of stamping presses and implement bending, shearing and punching type operations with ease and perfection.

Owing to the inbuilt tooling facility, our company gets an edge to manufacture optimum quality sheet metal parts tools, Moulds, Drilling Fixture, Receiving Gauge, Standard Gauge, Welding Fixture & All Kinds of Tool Room Works and is provided at reasonable prices.

* Automotive Components * Non Automotive Components * Rubber & Plastic
Parts

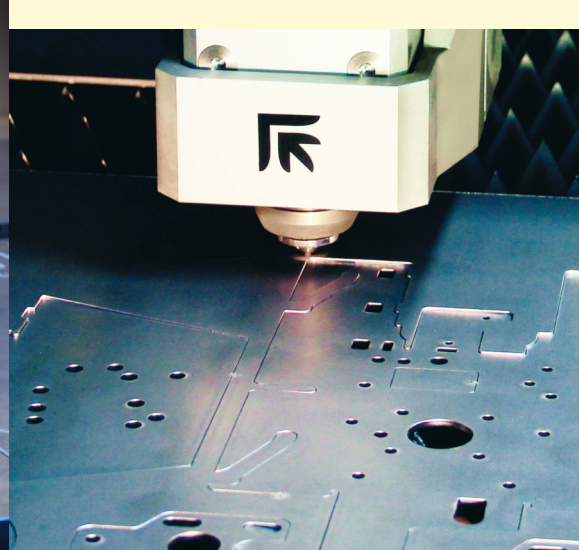
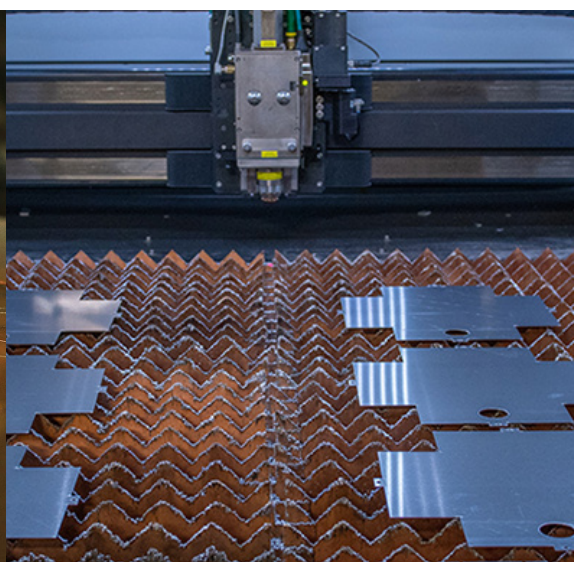


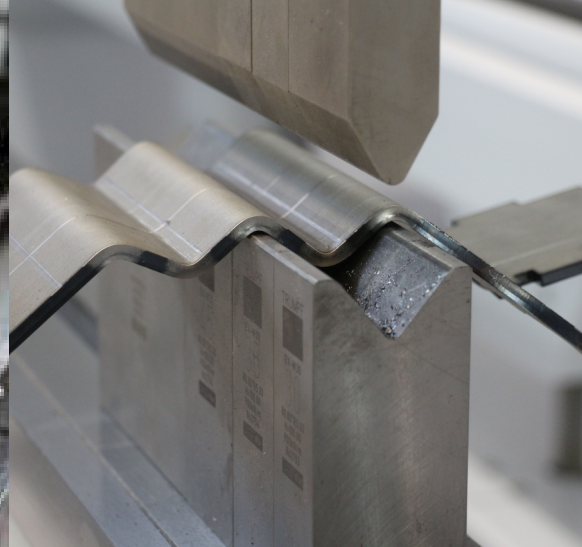
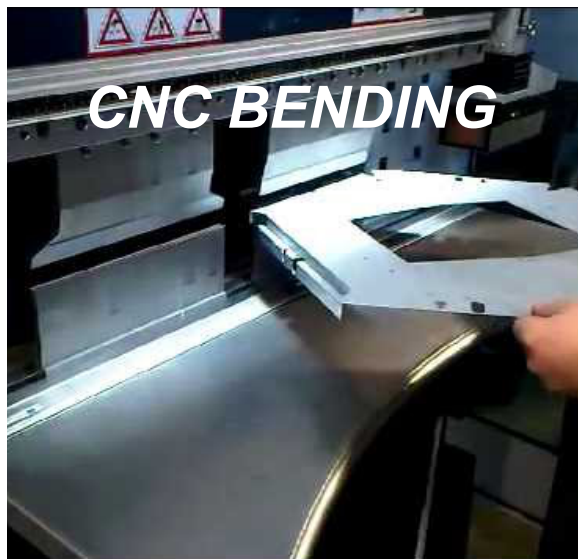
our Plant & Machinery...

- Laser Cutting Machine (Sheet Size : 1500 x 2700mm) Cutting Thickness MS (0.6 x 14mm) SS(0.6 x 6mm)
- CNC Bending Machine Bending Thickness (3mm : 3100mm) (4mm : 2500mm)
- Shearing Machine - 2mm
- Power Press - 63 Ton / 30 Ton / 10Ton / 5Ton (6 Nos.)
- MIG Welding Machine - 440 Amp / ARC Welding Machine / TIG Welding Machine
- Imported Plastic Injection Molding Machine
- Powder Coating Plant (Coating Thickness Gauge/ PH Tasting Meter/ TDS Meter/ Conductivity Meter
- Spray Paint Booth Room (Air Filter Chamber) HOT Air Oven / Air Compressor / Air Dryer
- Spray Paint Tasting Lab (SST Chamber / Dust Chamber / Penetration Resistance / Rigidity Tester / IMPACT And Penetration Testing Equipment / Humidity Chamber / UV+ Water Flow Chamber / Dynamic Test Retention System)
- Traub Machine A32 / A25 (5 Nos.) / Turning ADDA A25 •
- Drill Machine ½" - 1" / Punching Machine
- Milling Machine / Buffing Machine / Grinding Machine

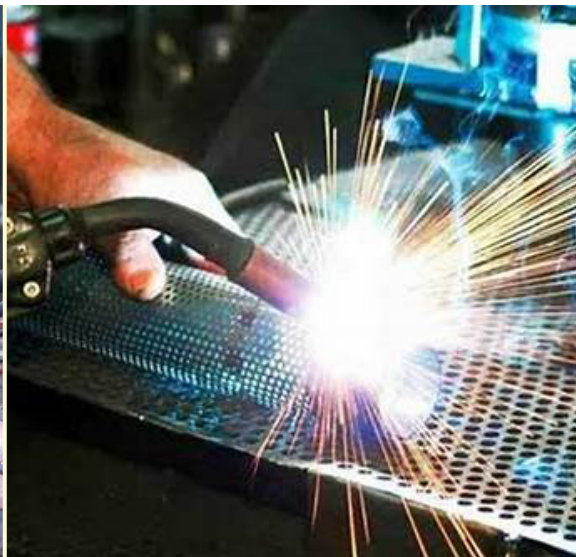


LASER CUTTING











POWDER COATING BOOTH



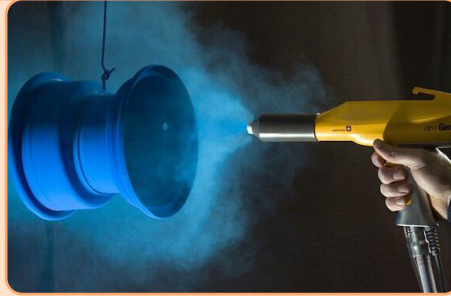
PAINT BOOTH



HOT AIR OVEN

POWDER COATING

MATERIAL :
Metal Parts, as per requirements



SPRAY PAINTING

MATERIAL

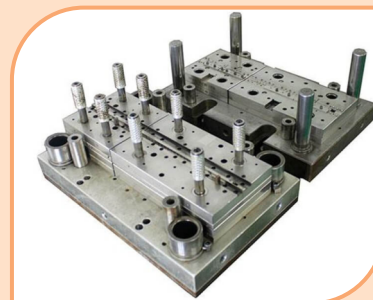
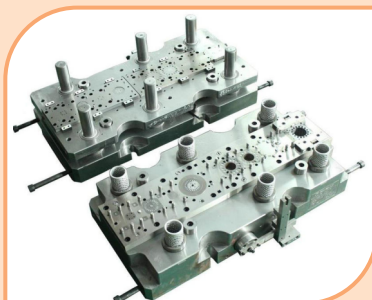
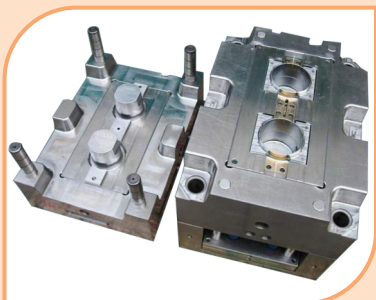
:

Metal Parts, Plastic Parts, ABS Parts,
Nylon Parts, PP CP, Fiber Parts, Wooden
Parts etc. as per requirements



❑ **MOULDS**

We offer a wide range of expertise in the design, building all type of moulds like Hot Runner Moulds, Pattern, Tools, Gauge, Jigs & Fixtures, Insert Moulds etc.



❑ **CUSTOMIZED SPECIAL SHAPE WIRE COMPONENTS**

MATERIAL : Carbon steel, Stainless steel
FINISH : Zinc Plating



- ❑ **CUSTOMIZED SPECIAL TUBULAR PARTS**
MATERIAL : Carbon steel, Stainless steel
FINISH : Zinc Plating



- ❑ **CUSTOMIZED SPECIAL MACHINED PARTS**
MATERIAL : Carbon steel, Stainless steel
FINISH : Zinc Plating

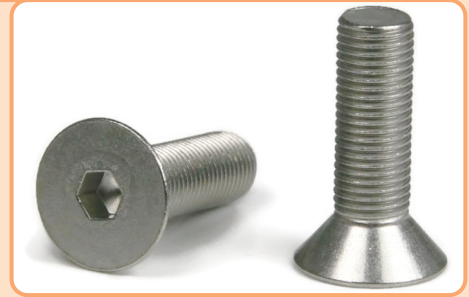


- ❑ **CUSTOMIZED SPECIAL FORGED PARTS**
MATERIAL : Carbon steel, Stainless steel
FINISH : Zinc Plating



❑ **SOCKET COUNTER SUNK SCREWS (MS/SS)**

STANDARDS	: DIN 7991, IS 6761, BS 4168
DIAMETER	: 3mm to 24mm, 1/4" to 1"
LENGTH	: 5mm to 150mm, 3/8" to 4"
GRADES	: 8.8, 10.9, 12.9, A2, A4
FINISH	: Black, Zinc Blue, Hot Dip, Decromate, Yellow Passivation



❑ **SOCKET BUTTON HEAD SCREWS (MS/SS)**

STANDARDS	: ISO 7380, DIN 9427, BS 4168
DIAMETER	: 3mm to 12mm, 5/16" to 3/8"
LENGTH	: 5mm to 50mm, 3/8" to 1"
GRADES	: 8.8, 10.9, 12.9, A2, A4
FINISH	: Black, Zinc Blue, Hot Dip, Decromate, Yellow Passivation



❑ **HEX HEAD SCREWS & BOLTS (MS/SS)**

STANDARDS	: DIN 931/933, ISO 4014/4017
DIAMETER	: 4mm to 52mm, 1/8" to 1.1/2"
LENGTH	: 5mm to 400mm, 3/8" to 12"
GRADES	: 8.8, 10.9, 12.9, A2, A4
FINISH	: Black, Zinc Blue, Hot Dip, Decromate, Yellow Passivation



❑ **FLANGE HEAD SCREWS & BOLTS (MS/SS)**

STANDARDS : DIN 6921
DIAMETER : 6mm to 16mm
LENGTH : 10mm to 50mm
GRADES : 8.8, 10.9, 12.9, A2, A4
FINISH : Black, Zinc Blue, Hot Dip, Decromate, Yellow Passivation



❑ **FULL THREADED STUD & RODS (MS/SS)**

STANDARDS : DIN 975, 976, A193
DIAMETER : 12mm to 48mm, 1/2" to 1.1/2"
LENGTH : 10mm to 2mtr, 2" to 6'
GRADES : 8.8, 10.9, 12.9, A2, A4
FINISH : Black, Zinc Blue, Hot Dip, Decromate, Yellow Passivation



❑ **SOCKET HEAD CAP SCREWS (MS/SS)**

STANDARDS : DIN 912, ISO 4762, IS 2269
DIAMETER : 2mm to 48mm, 1/8" to 1.1/2"
LENGTH : 5mm to 400mm, 3/8" to 12"
GRADES : 8.8, 10.9, 12.9, A2, A4
FINISH : Black, Zinc Blue, Hot Dip, Decromate, Yellow Passivation



□ **HEX NUTS (MS/SS)**

STANDARDS : DIN 934, ISO 4032, IS1364, BS 1083/1768, A194
DIAMETER : 3mm to 100mm, 1/4" to 2"
GRADES : cl 6, cl 8, cl 10, 2H, A2, A4
FINISH : Black, Zinc Blue, Hot Dip, Decromate, Yellow Passivation



□ **NYLOCK NUTS (MS/SS)**

STANDARDS : DIN 982/985, ISO 7040
DIAMETER : 3mm to 48mm, 1/4" to 1.1/2"
GRADES : cl 6, cl 8, cl 10, 2H, A2, A4
FINISH : Zinc Blue, Yellow Passivation



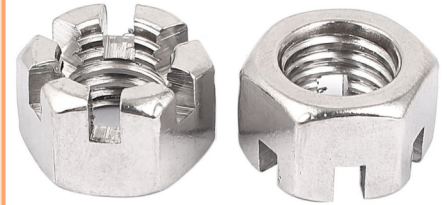
□ **FLANGE NUTS (MS/SS)**

STANDARDS : DIN 6923
DIAMETER : 4mm to 20mm
GRADES : cl 6, cl 8, cl 10, 2H, A2, A4
FINISH : Zinc Blue, Yellow Passivation



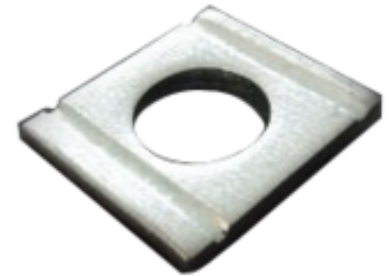
❑ **SLOTTED & CASTLE NUTS (MS/SS)**

STANDARDS : DIN 935
DIAMETER : 6mm to 48mm, 3/8" to 1.1/2"
GRADES : cl 6, cl 8, cl 10, 2H, A2, A4
FINISH : Black, Zinc Blue, Hot Dip, Decromate, Yellow Passivation



❑ **TAPPER WASHERS (MS/SS/ALU)**

STANDARDS : DIN 434 & 435
DIAMETER : 12mm to 30mm, 1/2" TO 1.1/2"
GRADE : Steel
FINISH : Black, Zinc Blue, Hot Dip, Yellow Passivation



❑ **SQUARE WASHERS (MS/SS/ALU)**

STANDARDS : DIN 436
DIAMETER : 12mm to 22mm, 3/8" TO 1.1/2"
GRADE : Steel
FINISH : Black, Zinc Blue, Hot Dip, Yellow Passivation



- **PLAIN & FLAT WASHERS (MS/SS/ALU)**
 - STANDARDS : DIN 125A, B, 433, 9021, 126, 1440
 - DIAMETER : 6mm to 46mm, 3/8" TO 2"
 - GRADE : Steel, Hardness Steel, A2, A4
 - FINISH : Black, Zinc Blue, Hot Dip, Yellow Passivation



- **HELICAL SPRING LOCK WASHER (MS/SS)**
 - STANDARDS : DIN 127A & 127B
 - DIAMETER : 3mm to 42mm
 - MATERIAL : Spring Steel & Stainless Steel
 - FINISH : Black & Stainless Steel Finish



- **INTERNAL TOOTHED LOCK WASHER (MS/SS/ALU)**
 - STANDARDS : DIN 6797 FORME J
 - DIAMETER : 3mm to 20mm
 - MATERIAL : Spring Steel Heat Treated
 - FINISH : Black, Zinc Plated



□ **EXTERNAL TOOTHED LOCK WASHERS (MS/SS/ALU)**

STANDARDS : DIN 6797 FORME A
DIAMETER : 3mm to 20mm
MATERIAL : Spring Steel Heat Treated
FINISH : Black, Zinc Plated



□ **DISC WASHERS (MS/SS/ALU)**

STANDARDS : DIN 2093
DIAMETER : 8mm to 112mm
MATERIAL : Spring Steel & Stainless Steel
FINISH : Black & Stainless Steel Finish



□ **WAVE WASHERS (MS/SS/ALU)**

STANDARDS : DIN 137
DIAMETER : 2.5mm to 100mm
MATERIAL : Spring Steel & Stainless Steel
FINISH : Black & Stainless Steel Finish



□ **HALF THREADED STUDS (MS/SS)**

STANDARDS : DIN 939 & DIN 985
DIAMETER : 6mm to 52mm, 1/4" to 2"
LENGTH : 25mm to 400mm, 1" to 12"
GRADES : 8.8, 10.9, 12.9, A2, A4
FINISH : Black, Zinc Blue, Hot Dip, Decromate, Yellow Passivation



□ **SELF TAPPING INSERTS (MS/SS)**

STANDARDS : Ensart Type 302, 307, 308, 317, 318, 337 & 338
DIAMETER : 2mm to 30mm, #4 to 5/8" UNF & UNC Threads
MATERIAL : Unhardened Steel, Case-Hardened Steel, Brass, Rust Proof Steel.
FINISH : Zinc Plated, Yellow Chromate, Stainless Steel.



□ **RIVET NUTS INSERTS**

DIAMETER : 6.20mm
LENGTH : 10mm
GRADES : 302
MATERIAL : Aluminum, Carbon steel, Stainless steel
FINISH : Zinc Yellow, Zinc Clear, Nickel Flash



❑ **SOCKET SET SCREWS (MS/SS)**

STANDARDS : DIN 913, 914, 915 & 916
DIAMETER : 3mm to 20mm, 3/16" to 3/4"
LENGTH : 3mm to 100mm, 3/16" to 2"
GRADES : 8.8, 10.9, 12.9, A2, A4
FINISH : Black, Zinc Blue, Hot Dip, Decromate, Yellow Passivation



❑ **SHEET METAL, PLASTIC & RUBBER PARTS**

MATERIAL : Carbon steel, Stainless steel, Zinc Plating etc.
as per requirements



❑ **SPRING DOWEL PIN (HOLLOW TYPE) (MS/SS)**

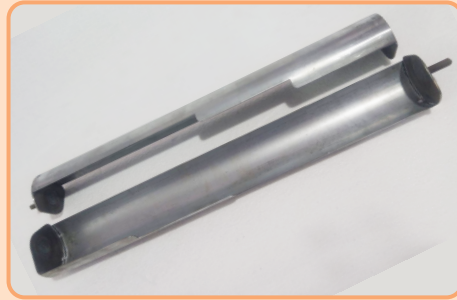
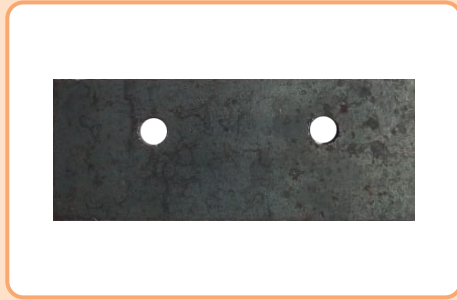
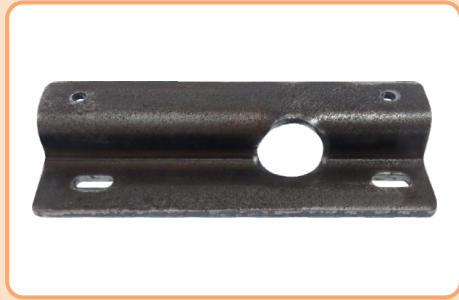
STANDARDS : DIN 1481, 7346, ISO 13337, 8752
DIAMETER : 1.5mm to 36mm
MATERIAL : Heat Treated Spring Steel & Stainless Steel
FINISH : Black & Steel Finish



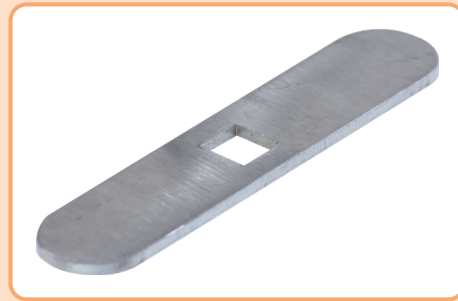
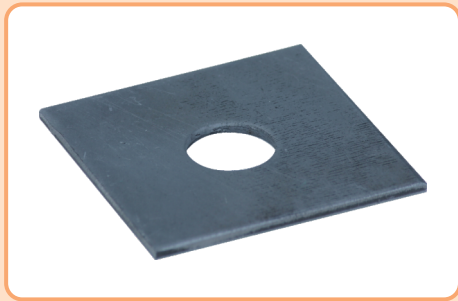
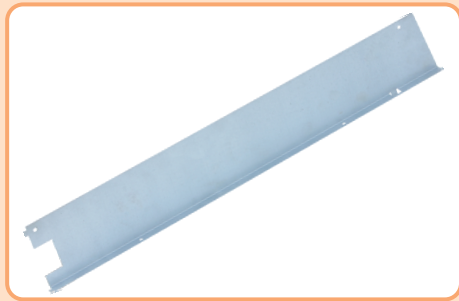
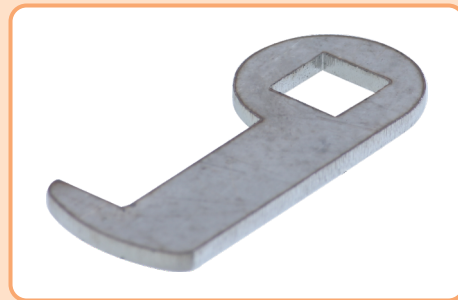
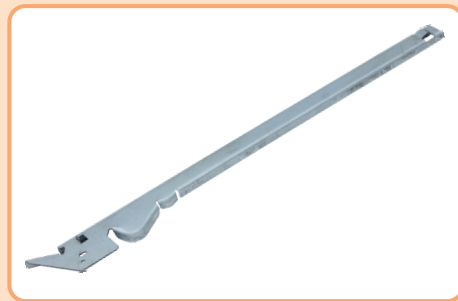
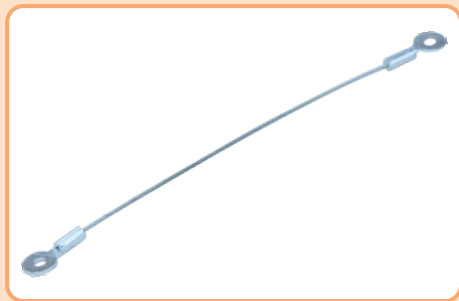
LASER / BENDING / WELDED PARTS



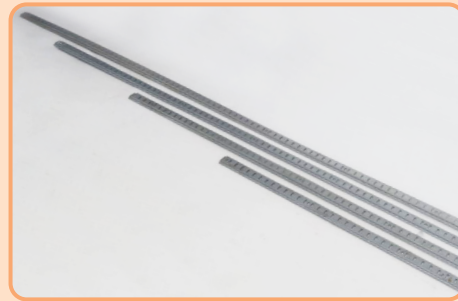
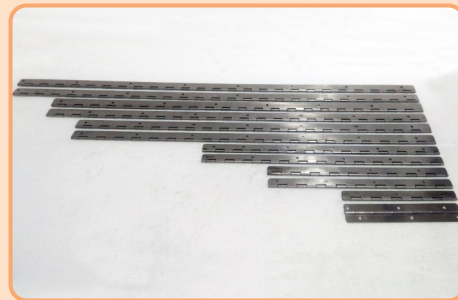
LASER / BENDING PARTS



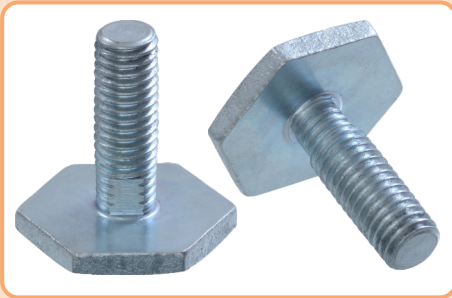
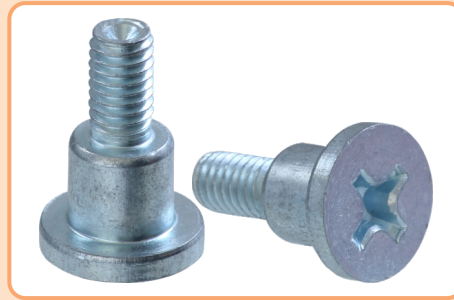
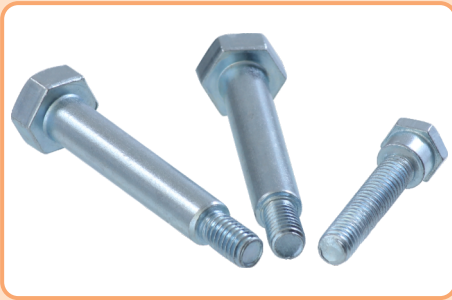
SHEET METEL POWER PRESS PARTS



CUSTOMIZED PARTS



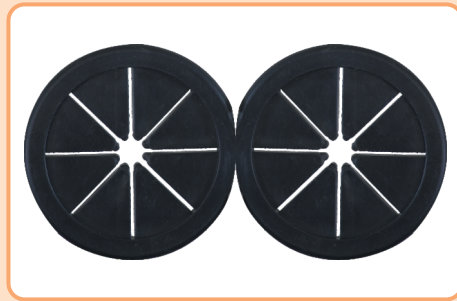
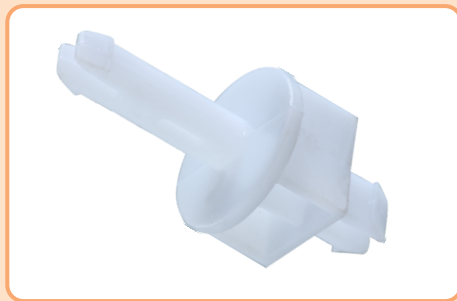
CUSTOMIZED PARTS



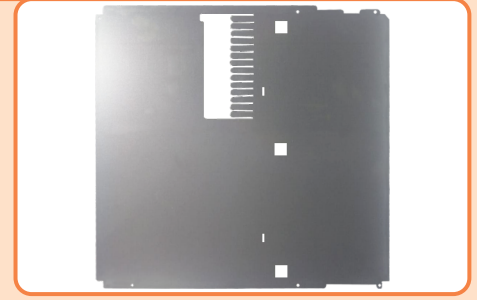
CUSTOMIZED PARTS



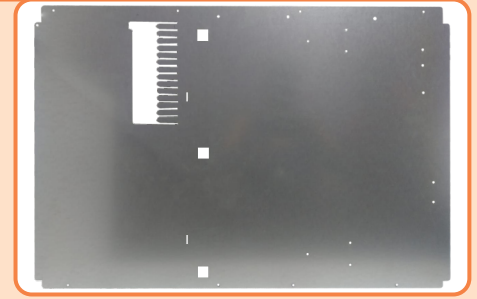
PLASTIC & RUBBER PARTS



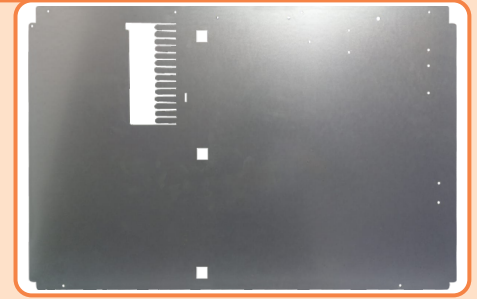
- **CUSTOMIZED SPECIAL PANEL**
MATERIAL : GPSP



- **CUSTOMIZED SPECIAL PANEL**
MATERIAL : GPSP



- **CUSTOMIZED SPECIAL PANEL**
MATERIAL : GPSP



❑ CRITICAL PARTS

We design & manufacture complicated parts using high quality CNC & VMC machines maintaining international quality standard for metal as well as plastic parts.



❑ WIRE THREAD INSERTS (MS/SS)

RANGE : M2 to M36 & 1/8" to 1.1/2"
MATERIAL : SS 304, INCONEL X750, NITRONIC 60
PHOSPHOR BRONZE, TITANIUM
FINISH : Silver Plating, Cadmium Plating, Primer Free,
Color Coding, Dry Film Lubricant, Ss Self.
TYPE : Free Running & Screw Locking



❑ HSS STI THREADED TAPS (STD)

RANGE : M2 to M36 & 1/8" to 1.1/2"
TYPE : HSS STI Roughing Tap, HSS STI Intermediate Tap,
HSS STI Bottoming Tap, HSS STI Spiral Flute Tap,
HSS STI Spiral Point Tap



❑ CAGE NUTS

MATERIAL	: CARBON STEEL
PANEL THICKNESS	: 1.6mm
FEATURES	: High resistance to corrosion, Effective performance
FINISH	: High grade steel



❑ PROTO PARTS

Our company developed a technique to produce proto parts as per the Customer specified raw material and dimension in a quick time .



❑ LIFTING EYE BOLT

STANDARDS	: DIN 580, ISO 3266
DIAMETER	: 6mm to 100mm
MATERIAL	: Steel C 15
FINISH	: Black, Zinc Blue, Yellow



- **METAL ROOFING SELF DRILLING SCREWS**
 - STANDARDS : CSK HEAD, PAN HEAD, TRUSS HEAD
 - DIAMETER : 3mm to 20mm, 3/16" to 3/4"
 - LENGTH : 6mm to 130mm, 1/2" to 5"
 - MATERIAL : Carbon steel, Stainless steel
 - FINISH : Zinc Plating, Xylon Plating



- **SELF DRILLING SCREWS**
 - STANDARDS : CSK HEAD, PAN HEAD, TRUSS HEAD
 - DIAMETER : 3mm to 20mm, 3/16" to 3/4"
 - LENGTH : 6mm to 130mm, 1/2" to 5"
 - MATERIAL : Carbon steel, Stainless steel
 - FINISH : Zinc Plating, Xylon Plating



- **M4 PAN WASHER HEAD SCREWS**
 - MATERIAL : Carbon steel, Stainless steel
 - FINISH : Zinc Plating, Xylon Plating



**“IF YOU CAN BELIEVE,
YOU CAN ACHIEVE”**



A Quality Product Manufactured by :

K K ENTERPRISES

PLOT No. 317, MODERN INDUSTRIAL ESTATE (MIE)

PART-A, BAHADURGARH-124507 (INDIA)

Mob.: +91 999 0000 714, +91 999 0000 721

Email : kkenterprises317@gmail.com, kkenterprisesmie@gmail.com